



EVER PRIME
RESIDENCES

— *by Anocha* —

— — —
EVER PRIME
RESIDENCES
by Ancha
— — —





DISCOVER YOUR FUTURE HOME

Live Life Above It All on a gentle hillside in the heart of Karon, Phuket. Ever Prime Residences by Anocha is the new premium landmark in Karon with 492 Residences offering breathtaking sea, mountain, and city views.

Designed with modern aesthetics, this 8-level residence across four buildings seamlessly blends contemporary elegance with nature. Each unit features sleek curves, white and off-white palette, and slate-toned accents that create a timeless, sophisticated atmosphere.

Prime Location, Effortless Convenience, Endless Amenities

Strategically located just a short walk to Kata Beach, Ever Prime Residence by Anocha's prime location ensures effortless access to Phuket's finest shops, restaurants, and attractions, balancing serenity with urban connectivity.

Ever Prime Residences by Anocha offers an unparalleled range of amenities designed for comfort, wellness, and convenience at your doorstep offering an unmatched lifestyle in a prime Karon location.

Discover your future home at Ever Prime Residences by Anocha.



DISCOVER UNPALLELED FACILITIES

Ever Prime Residences by Anocha in Karon offers an exceptional lifestyle with a comprehensive range of amenities designed for comfort, wellness, and convenience.

Residents can unwind in double lap swimming pools, a breathtaking mountain and sea view rooftop pool, a luxurious spa, and dedicated Thai massage facilities.

Fitness and recreation options include a fully equipped gym, sauna, ice baths, yoga spaces, a squash court, a golf simulator, and a vibrant games room. The development also features the first 24-hour Villa Supermarket, coffee shop, coworking space, business hub, and library for work and relaxation.

A stylish lobby welcomes residents and guests, while EV charging stations and secure underground parking add to the convenience. With beauty salon services, secure storage rooms, and every modern comfort at your doorstep, Ever Prime Residences by Anocha sets a new standard for luxury living in the heart of Karon.

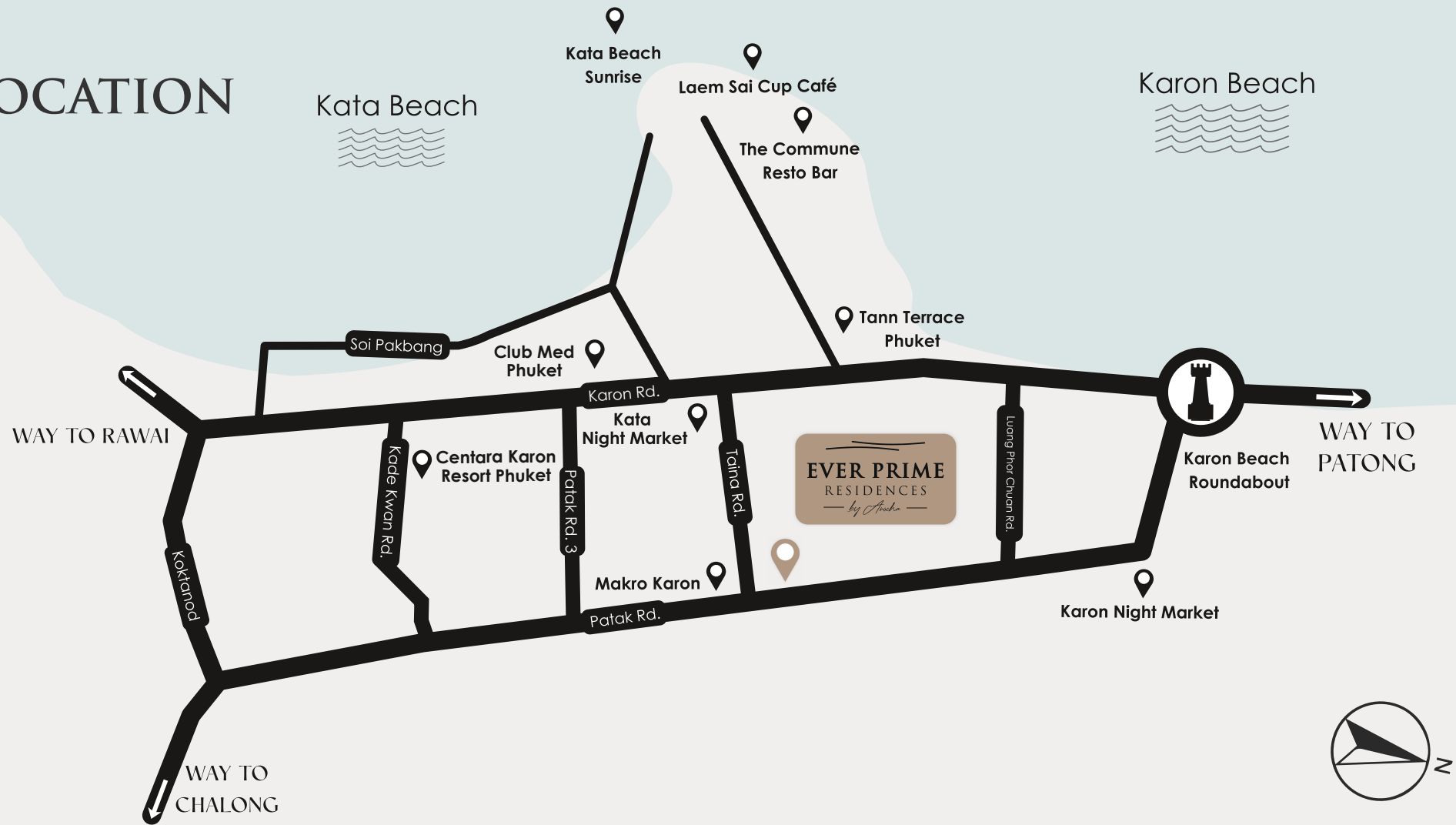
*COMPUTER GENERATED IMAGE

*COMPUTER GENERATED IMAGE

ROOF TOP POOL



LOCATION



*COMPUTER GENERATED IMAGE

DEPARTMENT STORES & LIFESTYLE SHOPPING MALLS

KATA NIGHT MARKET	0.8 KM.
KARON NIGHT MARKET	2.8 KM.
ROBINSON LIFESTYLE CHALONG	9.0 KM.
CENTRAL PATONG	11.0 KM.
JUNGCEYLON SHOPPING CENTER	11.1 KM.
RAWAI SEAFOOD MARKET	11.3 KM.
CENTRAL PHUKET FLORESTA	14.9 KM.

LEISURE & LIFESTYLE

DINO PARK MINI GOLF	0.9 KM.
THE COMMUNE RESTO BAR	1.3 KM.
CHALONG PIER	5.8 KM.
SKYLINE ADVENTURE PHUKET	5.8 KM.
SIMON CABARET PHUKET	7.8 KM.
FROGGY'S FUN PARK	11.1 KM.
TIGER KINGDOM PHUKET	14.8 KM.

INTERNATIONAL SCHOOL

ISP INTERNATIONAL SCHOOL PHUKET	0.6 KM.
BCIS INTERNATIONAL SCHOOL PHUKET	8.2 KM.
RUAMRUDEE INTERNATIONAL SCHOOL PHUKET	10.5 KM.
OAK MEADOW INTERNATIONAL SCHOOL PHUKET	10.9 KM.
KAJONKIET INTERNATIONAL SCHOOL PHUKET	12.6 KM.
HEADSTART INTERNATIONAL SCHOOL PHUKET	14.5 KM.
OSI INTERNATIONAL SCHOOL PHUKET	17.8 KM.

HOSPITAL

HEALTH PLUS MEDICAL CLINIC PHUKET	0.2 KM.
KARON HEALTH CENTER PHUKET	2.9 KM.
CHALONG HOSPITAL PHUKET	6.0 KM.
PATONG HOSPITAL PHUKET	10.1 KM.
DIBUK HOSPITAL PHUKET	13.3 KM.
BANGKOK SIRIROJ HOSPITAL PHUKET	16.1 KM.
BANGKOK HOSPITAL PHUKET	18.3 KM.

BEACHES

KATA BEACH	0.9 KM.
KARON BEACH	1.4 KM.
NAI HAN BEACH	8.2 KM.
PATONG BEACH	8.9 KM.
RAWAI BEACH	11.9 KM.
KAMALA BEACH	19.7 KM.
SURIN BEACH	23.4 KM.

*COMPUTER GENERATED IMAGE

PROJECT INFORMATION

TOTAL LAND SIZE	6 RAI (APPROX.)
TOTAL UNIT	492 UNITS
LOCATION	KARON, PHUKET
PROJECT TYPE	LOW-RISE CONDOMINIUM 4 BUILDINGS (8 FLOORS), WITH UNDERGROUND PARKING
CAR PARK	50 %

UNIT TYPE

- 1 BEDROOM
- 2 BEDROOM
- 4 BEDROOM

— — —
EVER PRIME
RESIDENCES
— *by Anocha* —



FACILITIES



* THIS IMAGE IS A MONTAGE USED TO SIMULATE THE OVERALL CONCEPT OF THE PROJECT.



FACILITIES

- DOUBLE LAP SWIMMING POOLS
- OCEAN VIEW ROOFTOP SWIMMING POOL
- KIDS' POOL
- KIDS' PLAYGROUND
- HOT & ICE BATH
- SAUNA & STEAM ROOM
- SPA & THAI MASSAGE
- BEAUTY SALON & NAIL SPA
- FITNESS CENTER & YOGA
- EV CHARGING
- VILLA MARKET 24 HOURS
- CHIANG MAI COFFEE
- BUSINESS HUB + CO-WORKING SPACE
- LIBRARY
- WELLNESS LOUNGE
- LOBBY
- STORAGE ROOM SERVICE
- GAMES ROOM
- GOLF SIMULATOR ROOM
- SQUASH COURT



*COMPUTER GENERATED IMAGE



*COMPUTER GENERATED IMAGE



FITNESS CENTER



SAUNA AND STEAM ROOM



*COMPUTER GENERATED IMAGE



WELLNESS LOUNGE

*COMPUTER GENERATED IMAGE

SPA AND THAI MASSAGE

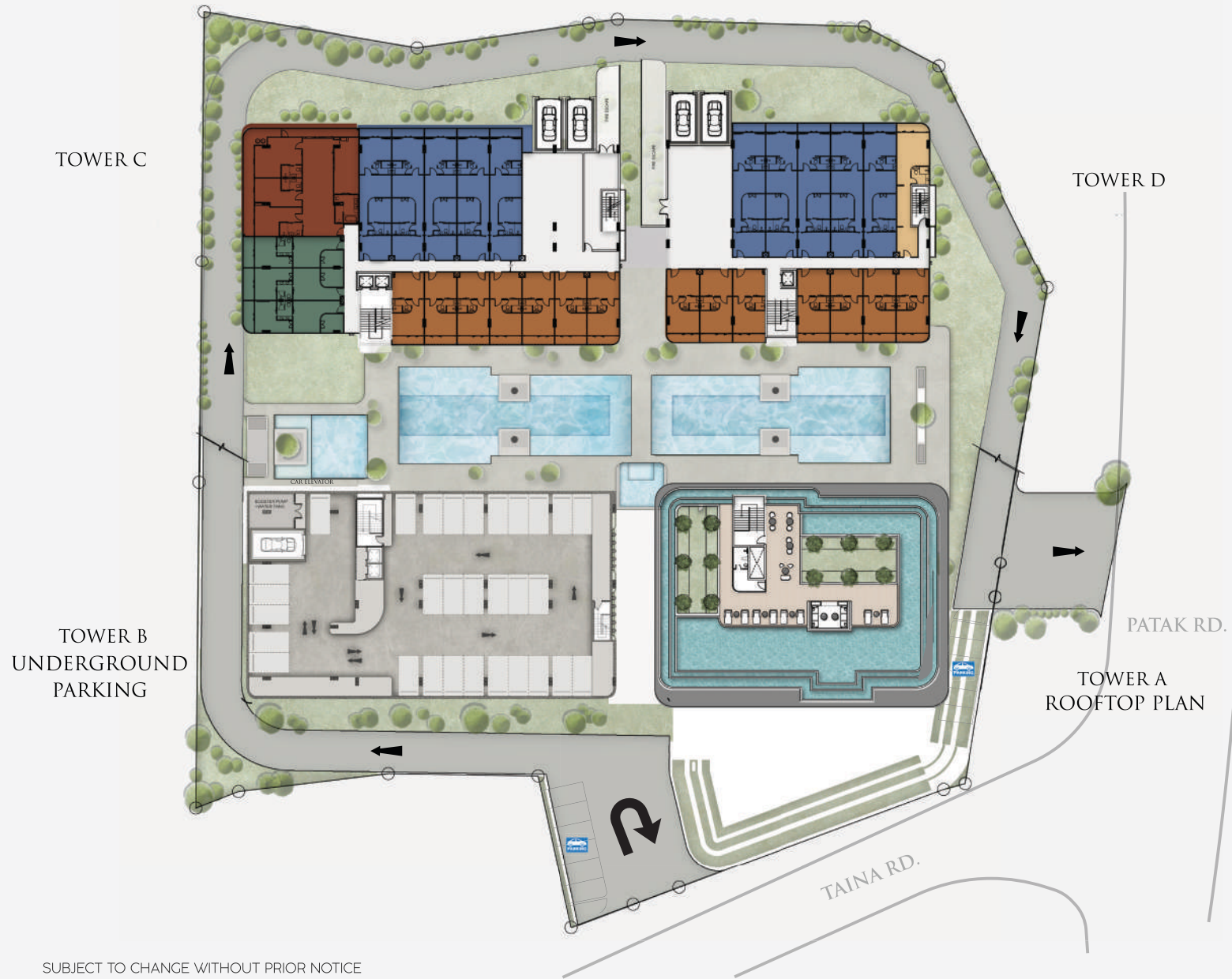


*COMPUTER GENERATED IMAGE

DISCOVER YOUR FUTURE HOME



MASTER PLAN



TOWER C

TOWER D

TOWER B
UNDERGROUND
PARKING

TOWER A
ROOFTOP PLAN

PATAK RD.

TAINA RD.

UNIT TYPE

- 1 BEDROOM
 - 32.89
 - 44.84
- 2 BEDROOM
 - 46.53
 - 60.09
- 4 BEDROOM
 - 176.35

SUBJECT TO CHANGE WITHOUT PRIOR NOTICE

FLOOR PLAN 1



UNIT TYPE

- 1 BEDROOM
 - 32.89
 - 44.84
- 2 BEDROOM
 - 46.53
 - 60.09
- 4 BEDROOM
 - 176.35

SUBJECT TO CHANGE WITHOUT PRIOR NOTICE

FLOOR PLAN 2



TOWER C
LANDSCAPE

TOWER D
LANDSCAPE

TOWER B
G1
GROUND FLOOR
(FACILITIES)

TOWER A
(FACILITIES)

PATAK RD.

TAINA RD.

UNIT TYPE

- 1 BEDROOM
 - 32.89
 - 44.84
- 2 BEDROOM
 - 46.53
 - 60.09
- 4 BEDROOM
 - 176.35



FLOOR PLAN 4



SUBJECT TO CHANGE WITHOUT PRIOR NOTICE

FLOOR PLAN 5



TOWER C
LANDSCAPE

TOWER D
1ST FLOOR PLAN

TOWER B
5TH FLOOR PLAN

PATAK RD.
TOWER A
7TH FLOOR PLAN



UNIT TYPE

- 1 BEDROOM
 - 32.89
 - 44.84
- 2 BEDROOM
 - 46.53
 - 60.09
- 4 BEDROOM
 - 176.35

SUBJECT TO CHANGE WITHOUT PRIOR NOTICE

FLOOR PLAN 6



TOWER C
G1 : GROUND FLOOR
(UNDERGROUND PARKING)

TOWER D
2ND FLOOR PLAN

TOWER B
6TH FLOOR PLAN

PATAK RD.
TOWER A
ROOFTOP PLAN



UNIT TYPE

- 1 BEDROOM
 32.89
 44.84
- 2 BEDROOM
 46.53
 60.09
- 4 BEDROOM
 176.35

SUBJECT TO CHANGE WITHOUT PRIOR NOTICE

FLOOR PLAN 7



TOWER C
1ST FLOOR PLAN

TOWER D
3RD FLOOR PLAN

TOWER B
7TH FLOOR PLAN

TOWER A
ROOFTOP PLAN



UNIT TYPE

- 1 BEDROOM
 - 32.89
 - 44.84
- 2 BEDROOM
 - 46.53
 - 60.09
- 4 BEDROOM
 - 176.35

SUBJECT TO CHANGE WITHOUT PRIOR NOTICE

FLOOR PLAN 8



TOWER C
2ND FLOOR PLAN

TOWER D
4TH FLOOR PLAN

TOWER B
8TH FLOOR PLAN

TOWER A
ROOFTOP PLAN



UNIT TYPE

- 1 BEDROOM
 - 32.89
 - 44.84
- 2 BEDROOM
 - 46.53
 - 60.09
- 4 BEDROOM
 - 176.35

SUBJECT TO CHANGE WITHOUT PRIOR NOTICE

FLOOR PLAN 9



TOWER C
3RD-6TH FLOOR PLAN

TOWER D
5TH-8TH FLOOR PLAN

TOWER B

TOWER A
ROOFTOP PLAN



UNIT TYPE

- 1 BEDROOM
 - 32.89
 - 44.84
- 2 BEDROOM
 - 46.53
 - 60.09
- 4 BEDROOM
 - 176.35

SUBJECT TO CHANGE WITHOUT PRIOR NOTICE

FLOOR PLAN 10



TOWER C
7TH 8TH FLOOR PLAN



TOWER D

PATAK RD.

TOWER A
ROOFTOP PLAN

TOWER B

UNIT TYPE

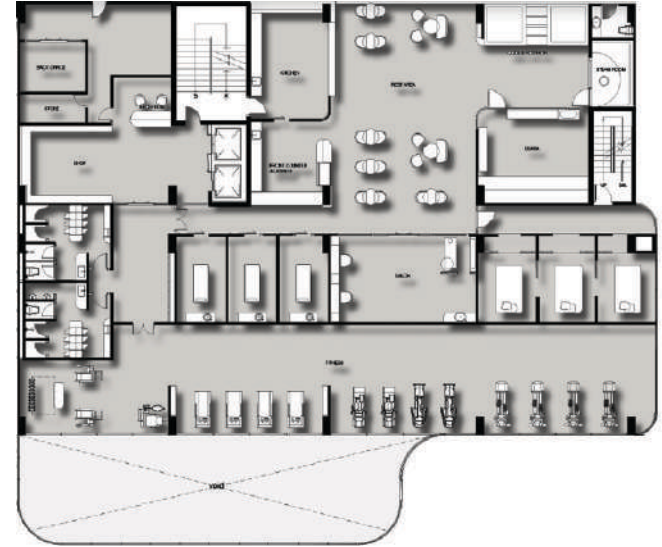
1 BEDROOM	■ 32.89	■ 44.84
2 BEDROOM	■ 46.53	■ 60.09
4 BEDROOM	■ 176.35	

SUBJECT TO CHANGE WITHOUT PRIOR NOTICE

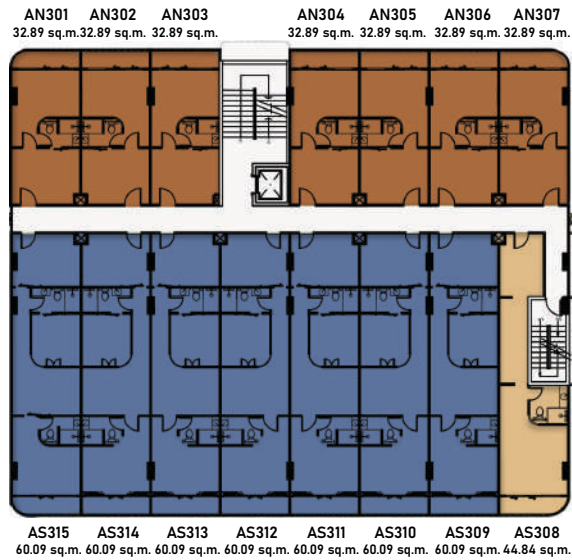
TOWER A



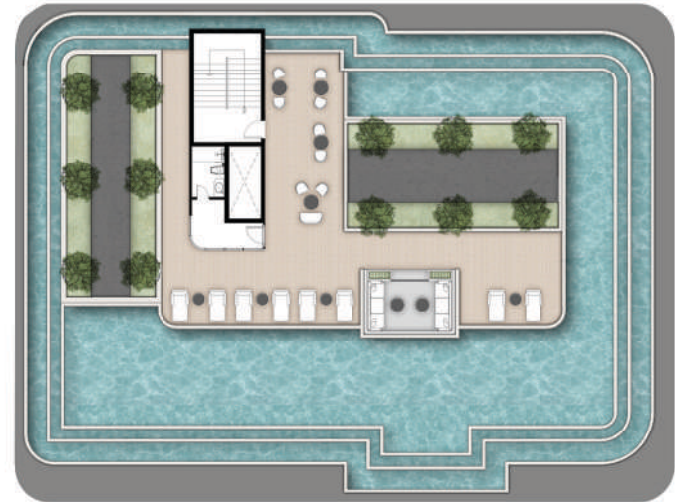
M1-M2 (DOUBLE SPACE)
VILLA MARKET



FACILITIES



3RD-7TH FLOOR PLAN



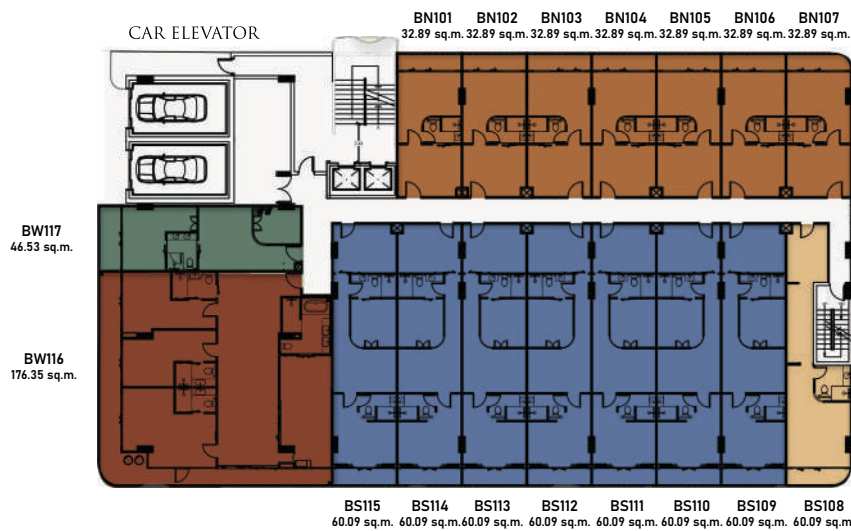
ROOFTOP

TOWER B

CAR ELEVATOR

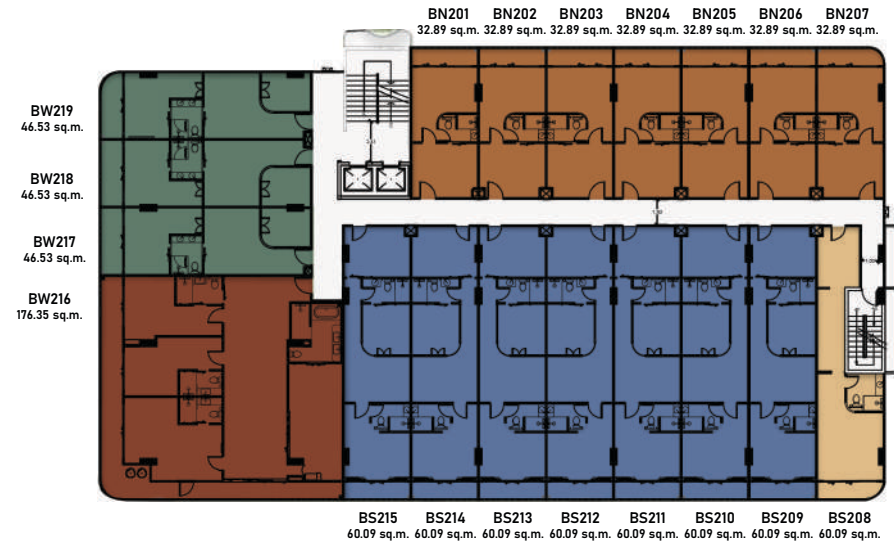


G2 GROUND FLOOR
(UNDERGROUND PARKING)



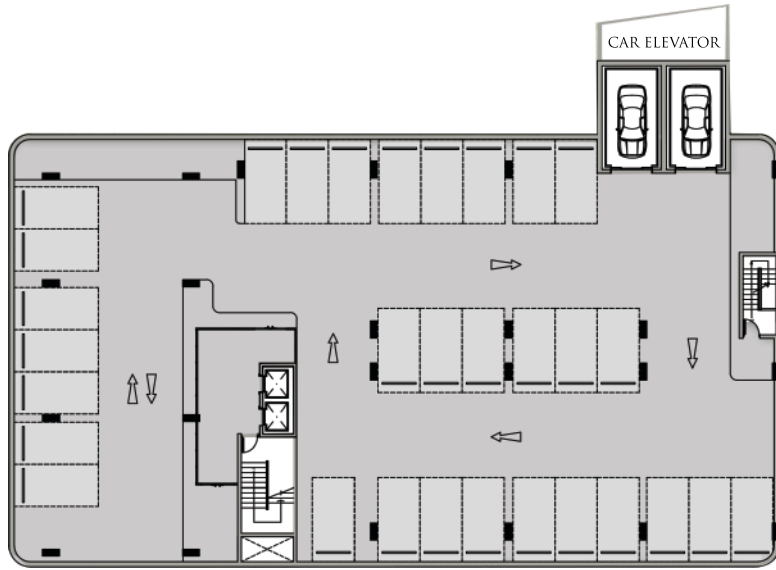
1ST FLOOR PLAN

FACILITIES

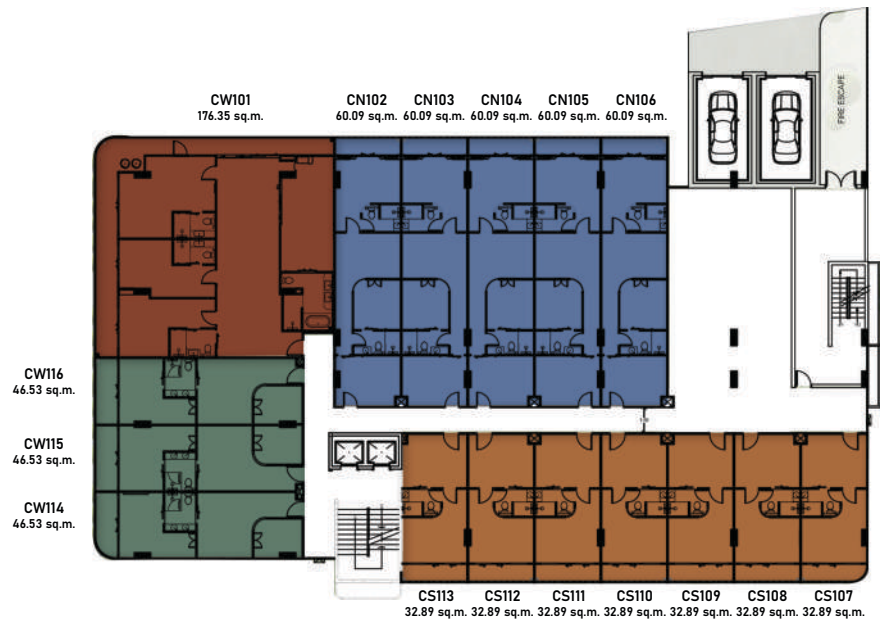


2ND-8TH FLOOR PLAN

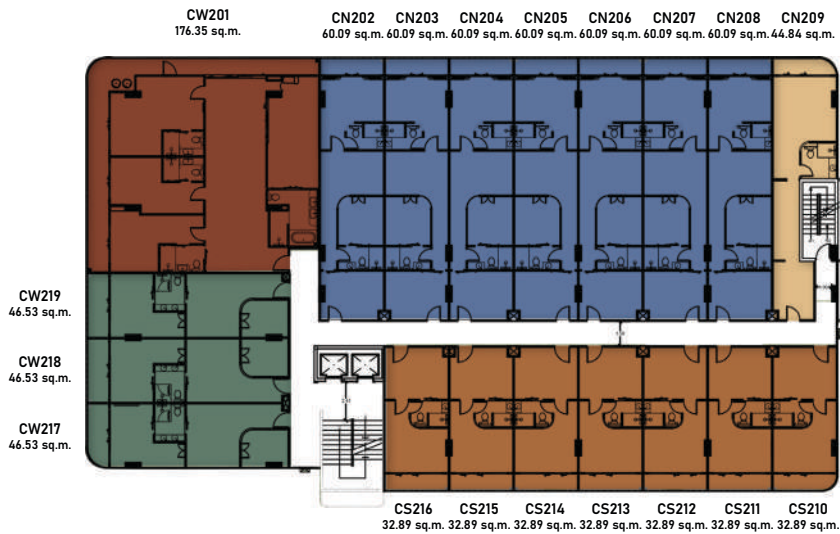
TOWER C



G2 GROUND FLOOR
(UNDERGROUND PARKING)



1ST FLOOR PLAN



2ND-8TH FLOOR PLAN

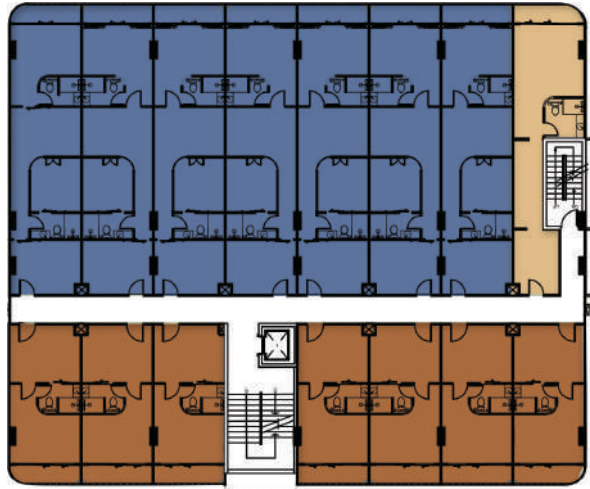
TOWER D

CAR ELEVATOR



G1-G3 GROUND FLOOR
(UNDERGROUND PARKING)

DN201 DN202 DN203 DN204 DN205 DN206 DN207 DN208
60.09 sq.m. 60.09 sq.m. 60.09 sq.m. 60.09 sq.m. 60.09 sq.m. 60.09 sq.m. 60.09 sq.m. 44.84 sq.m.



DS215 DS214 DS213 DS212 DS211 DS210 DS209
32.89 sq.m. 32.89 sq.m. 32.89 sq.m. 32.89 sq.m. 32.89 sq.m. 32.89 sq.m. 32.89 sq.m.

2ND-8TH FLOOR PLAN



CAR ELEVATOR
DN101 DN102 DN103 DN104 DN105 DN106
60.09 sq.m. 60.09 sq.m. 60.09 sq.m. 60.09 sq.m. 60.09 sq.m. 44.84 sq.m.

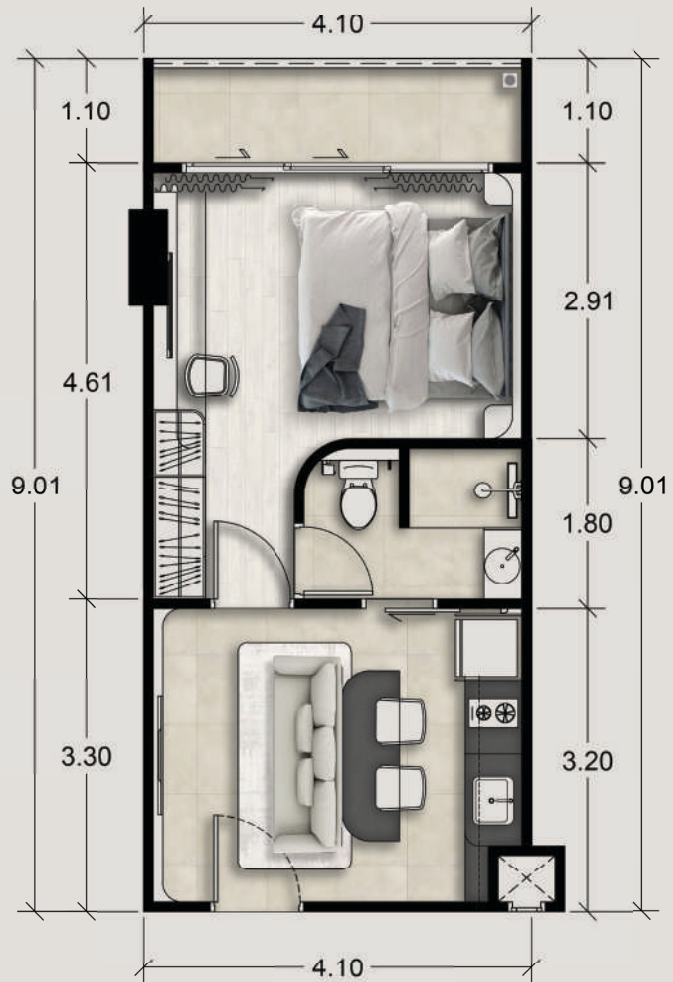
DS113 DS112 DS111 DS110 DS109 DS108 DS107
32.89 sq.m. 32.89 sq.m. 32.89 sq.m. 32.89 sq.m. 32.89 sq.m. 32.89 sq.m. 32.89 sq.m.

1ST FLOOR PLAN

+COMPUTER GENERATED IMAGE

SPACIOUS AL FRESCO BALCONY

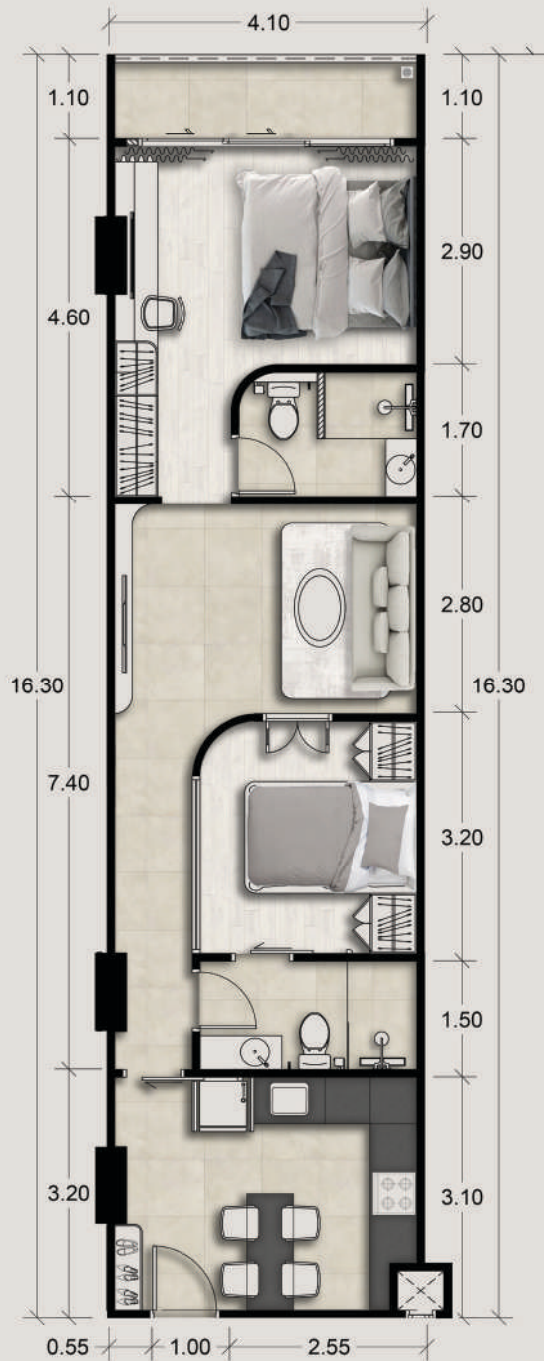




1 BEDROOM

STARTING AREA
32.89 - 44.84 SQ.M.

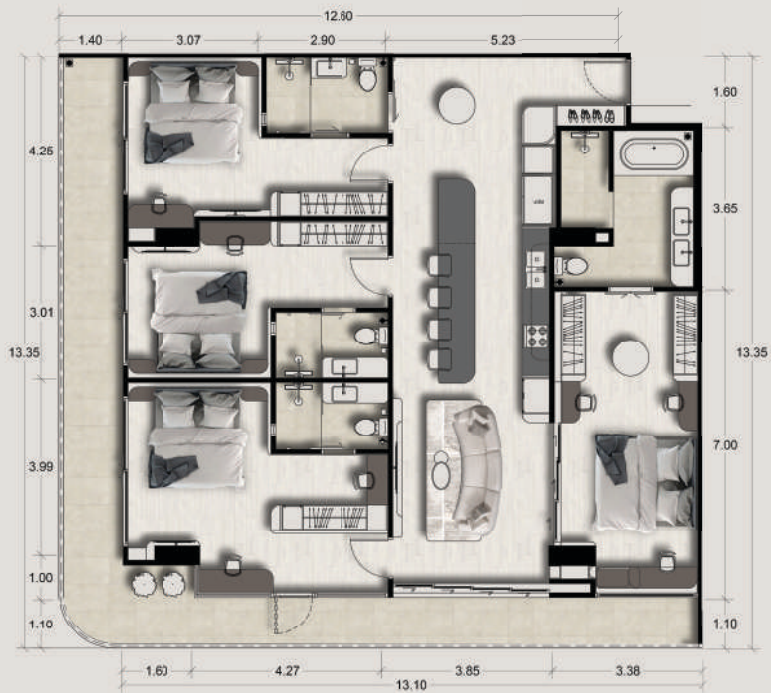
*Area is approximate and may vary



2 BEDROOM

STARTING AREA
46.53 - 60.09 SQ.M.

*Area is approximate and may vary



4 BEDROOM

STARTING AREA
176.35 SQ.M.

*Area is approximate and may vary



COMPUTER GENERATED IMAGE



EVER PRIME
DEVELOPMENT CO., LTD.

- Ever Prime Residence Comprising** : 492 units
- Project owner** : Ever Prime Development co., Ltd
- Registered capital** : 104,000,000 Baht (paid in full)
- Project Location** : 1 Patak Rd, Karon, Mueang Phuket District,
Phuket 83100 Thailand
- Completion expected** : December 2028
- Maintenance Fee** : The Maintenance fee is paid individually by
condominium unit owners and covers all common areas, security, pest control,
rubbish collection and estate management service.

(All specifications are subject to change without notice.)